



Collective architecture x
wolff&capon architects
Paris, France

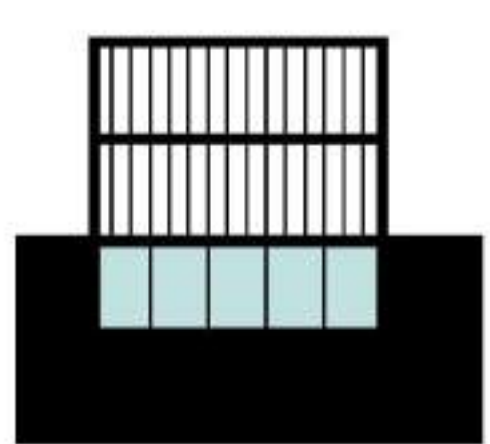
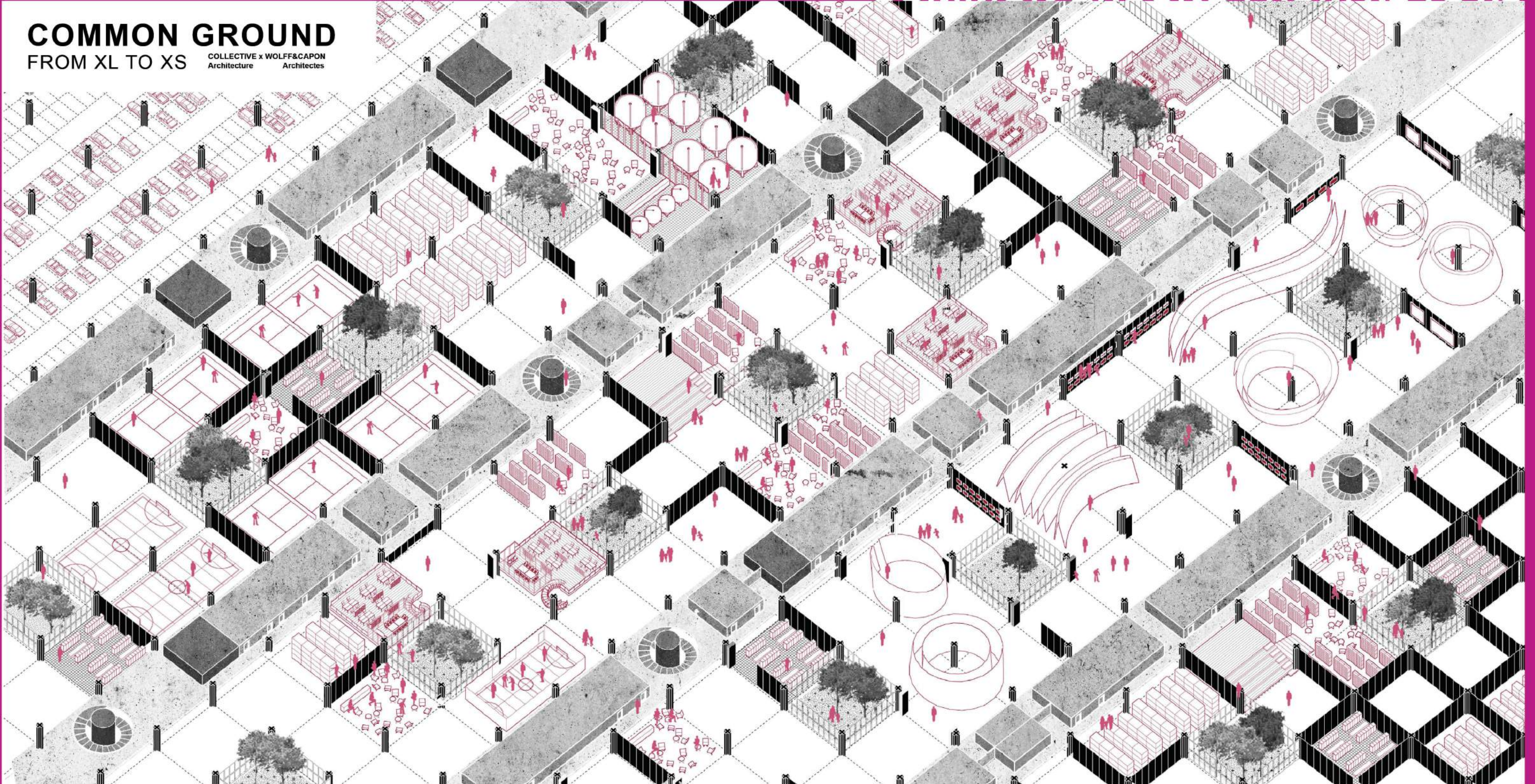
Team leader
Pauline Wolff, France

Team members
Camille Desplanques, France
Peran Guillaume, France
Bastien Capon, France

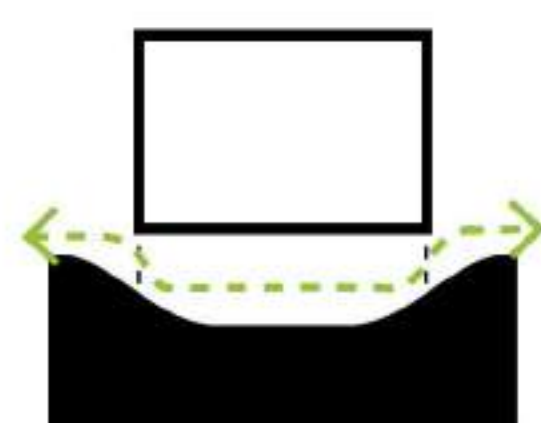
COMMON GROUND FROM XL TO XS

COMMON GROUND FROM XL TO XS

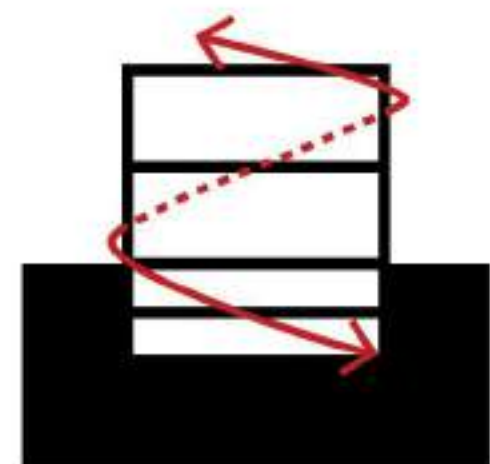
COLLECTIVE x WOLFF&CAPON
Architecture Architects



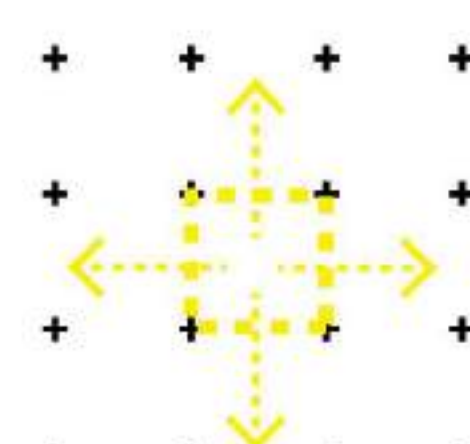
UNDERGROUND AS AN AVAILABLE VOLUME
Viability of the existing structure (higher's room)



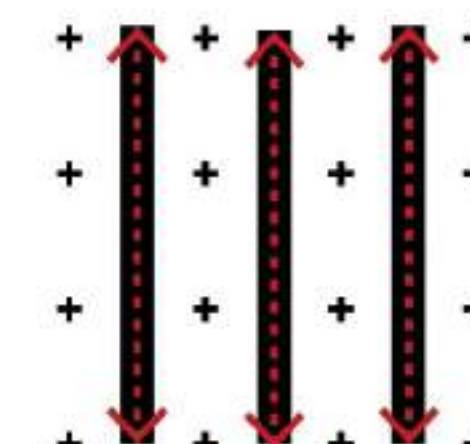
OPENING ON THE CITY'S ENVIRONMENT
Dialogue with urban space to exchange with the surroundings



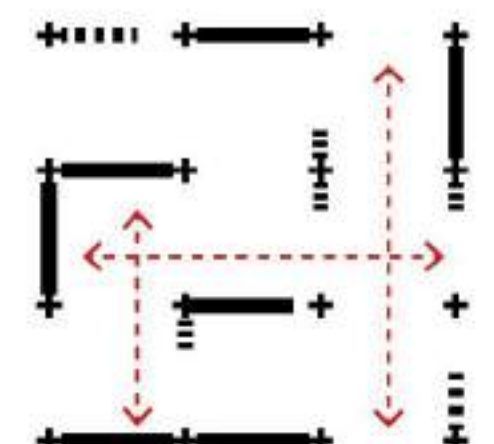
CONNECT LAYERS
Vertical sharing connections to generate a synergy between functions (common space for mobility functions, activities, hobbies, and vegetation)



NATURAL ENLIGHTENING AND VENTILATION
Input natural light and fresh air through patios



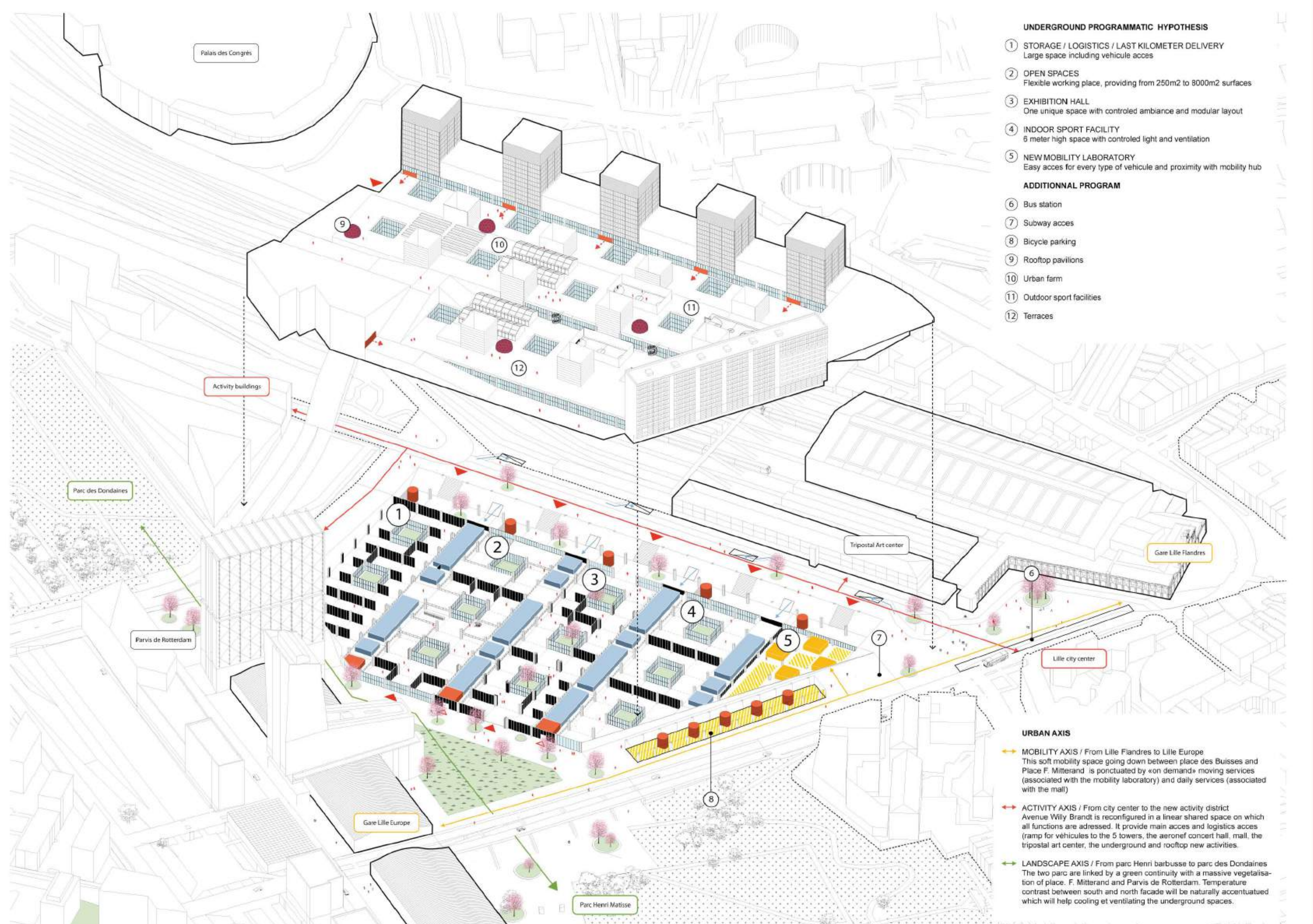
REUSE THE SPATIAL DISTRIBUTION
Keep original technics functions from the parking (strips of servant space)



MODULAR AND REVERSIBLE SPACE
Optimisation according to a regular frame (section doors and removable partitions)

COMMON GROUND FROM XL TO XS

COLLECTIVE x WOLFF&CAPON
Architecture Architects



UNDERGROUND PROGRAMMATIC HYPOTHESIS

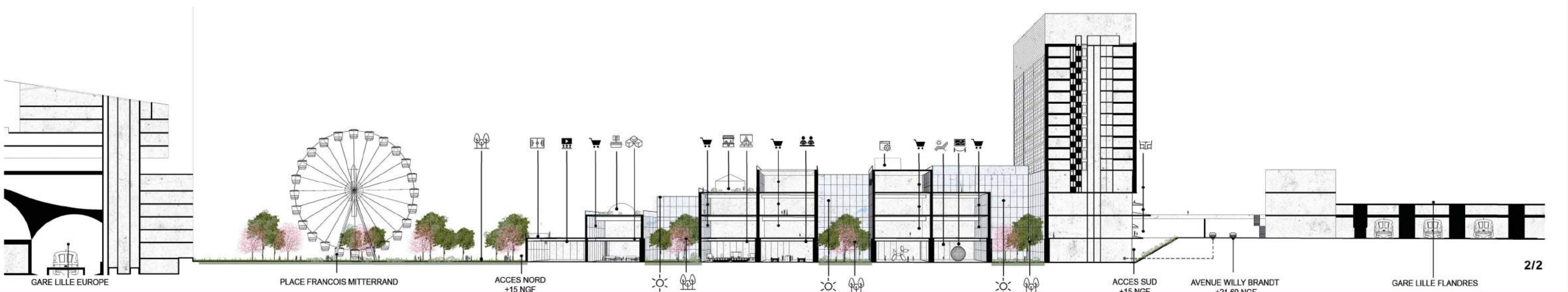
- 1 STORAGE / LOGISTICS / LAST KILOMETER DELIVERY
Large space including vehicle access
- 2 OPEN SPACES
Flexible working place, providing from 250m² to 8000m² surfaces
- 3 EXHIBITION HALL
One unique space with controlled ambience and modular layout
- 4 INDOOR SPORT FACILITY
6 meter high space with controlled light and ventilation
- 5 NEW MOBILITY LABORATORY
Easy access for every type of vehicle and proximity with mobility hub

ADDITIONAL PROGRAM

- 6 Bus station
- 7 Subway access
- 8 Bicycle parking
- 9 Rooftop pavilions
- 10 Urban farm
- 11 Outdoor sport facilities
- 12 Terraces

URBAN AXIS

- **MOBILITY AXIS** / From Lille Flandres to Lille Europe
This soft mobility space going down between place des Buisses and Place F. Mitterrand is punctuated by on demand moving services (associated with the mobility laboratory) and daily services (associated with the mall)
- **ACTIVITY AXIS** / From city center to the new activity district
Avenue Willy Brandt is reconfigured in a linear shared space on which all functions are addressed. It provide main access and logistics access (ramp for vehicles to the 5 towers, the aeronaut concert hall, mall, the tropical art center, the underground and rooftop new activities)
- **LANDSCAPE AXIS** / From parc Henri barbusse to parc des Dondaines
The two parks are linked by a green continuity with a massive vegetation of place F. Mitterrand and Parvis de Rotterdam. Temperature contrast between south and north facade will be naturally accentuated which will help cooling et ventilating the underground spaces.



GARE LILLE EUROPE

PLACE FRANCOIS MITTERRAND

ACCES NORD
+15 NGF

ACCES CENTRAL

ACCES SUD

ACCES SUD
+15 NGF

AVENUE WILLY BRANDT
+21.60 NGF

GARE LILLE FLANDRES